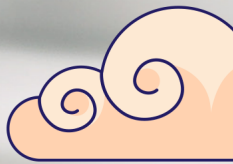




Close to you!

Asia Hub





We aim to serve you better!

Please find next the leaflet for the products in stock at our Asia Hub with their specifications and reference numbers.



Your needs, our innovations

01 · Amies, Cary Blair & Stuart sterile swab	4
02 · Swab for surface control	5
03 · Petri Dish	8
04 · Digrafsky spreader	8
05 · Sterile calibrated loops	9
06 · Cryoinstant	10
07 · Centrifuge tubes	10
08 · Screw cap tube, PS & PP tubes and caps	11
09 · Microtubes	13
10 · Autoclave bags	14
11 · Containers	15
12 · Pasteur pipettes	16
13 · Serological pipettes	17
14 · Tips	18
15 · Slides and Cover slides	20



Amies. Sterile

Universal transport media for bacteria in microbiological samples. It is a modification of the medium Cary Blair, itself of the medium Stuart. Basically, the glycerophosphate is changed from the original composition to inorganic phosphate and methylene blue for neutral pharmaceutical coal. In addition, it adds calcium and magnesium ions, which help preserve the permeability of the bacterial cell. This media assures the viability of organisms such as:

Neisseria sp.
Haemophilus sp.
Corynebacterium sp.
Trichomonas vaginalis
Streptococcus pyogenes
Streptococcus pneumoniae
Shigella flexneri
Salmonella typhi
Brucella abortus
Enterobacterias, etc.

The presence of charcoal on the media neutralises inhibitors and bacterial toxins, and improves the recovery ratio of *Neisseria gonorrhoeae* and *Vibrio cholerae*

Some microorganisms can resist on the media for up to 3 days, although the recovery of microorganisms is better if cultured in the first 24 hours. Amies transport swabs are available with or without charcoal.

Swabs are sterilised by radiation.

Peel-pack dimensions: 38 x 210 mm.

Expiry date: 30 months.



code	shaft material	tip material	case quantity	case weight	case volume
300287	snappable PS	viscose	6 x 100	9.33	0.059

Cases per pallet: 32.

Cary Blair. Sterile



Cary Blair is another modification of Stuart media.

The glycerophosphate has been substituted by inorganic phosphate since glycerophosphate is a metabolite for some bacteria, so they could grow and disperse the pathogens amount.

The methylene blue has also been removed and the pH increased to 8.4.

This is a media originally developed for faecal samples but is also used successfully for anaerobic transport, such as:

Neisseria gonorrhoeae
Vibrio cholerae
Vibrio parahaemolyticus
Haemophilus influenzae
Neisseria meningitidis
Streptococcus pneumoniae
Shigella flexneri
Pasteurella pestis
Campylobacter Spp., etc.

Swabs are **sterilized by radiation.**

Expiry date: 30 months from sterilization date.



code	shaft material	tip material	case quantity	case weight	case volume
300280.2	snappable PS	viscose	6 x 100	8.50	0.059

Cases per pallet: 32.

Stuart. Sterile

The modified Stuart media allows the conservation and transportation of a large number of pathological microorganisms, such as:

Neisseria gonorrhoeae
Haemophilus influenzae
Neisseria meningitidis
Bordetella pertusis
Corynebacterium diptheriae
Trichomonas vaginalis
Staphylococcus aureus
Streptococcus sp.
Salmonella sp.
Shigella sp. etc.

The most unstable organisms will remain viable for up to 24 hours and other for several days. The media is reduced due to the presence of thioglycolate, which difficulties the enzymatic reactions of the bacteria.

The multiplication of the bacteria is prevented due to the lack of nitrogen in the media.

Swabs are **sterilized by radiation**.

Expiry date: 30 months from sterilisation date.



code	shaft material	tip material	case quantity	case weight	case volume
300295	snappable PS	viscose	6 x 100	8.65	0.060

Cases per pallet: 32.



Swab for surface control: Aerobic

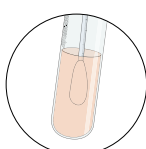
Swab with culture medium and growth indicator for the analysis of microbial load directly from surfaces. The medium includes an additive to indicate biological activity.

Interpretation of results

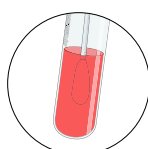
A colour change from yellow to pink is indicative of moderate microbial growth on the surface. A colour change from yellow to red is indicative of heavy microbial growth on the surface.



Absence of microbial growth



Moderate microbial growth



Strong microbial growth

Microbiological control

Staphylococcus aureus ATCC® 25923, WDCM 00034: Good - medium pink/red.
Escherichia coli ATCC® 25922, WDCM 00013: Good - medium pink/red.
Enterococcus faecalis ATCC® 19433, WDCM 00009: Good - medium pink/red.
Proteus mirabilis ATCC® 29906, WDCM 00023: Good - medium pink/red.

Detection range of 10-50 CFU.

Incubation at 37±1°C reading at 24-48 h.



code	description	case quantity	case weight	case volume
200180	Swabs for Aerobic control	25	2.84	0.025



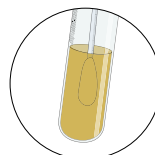


Swab for surface control: *Listeria* spp

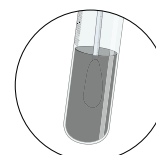
Swab with culture medium and growth indicator for the detection of *Listeria* spp. directly from surfaces. The medium includes a pH indicator to indicate biological activity.

Interpretation of results

A colour change from amber to black is indicative of the presence of *Listeria* spp. on the surface.



Absence of *Listeria* spp.



Presence of *Listeria* spp.

Microbiological control

Escherichia coli ATCC® 25922, WDCM 00013: Inhibited - yellow medium.
Enterococcus faecalis ATCC® 19433, WDCM 00009: Inhibited - yellow medium.
L. monocytogenes ATCC® 35152, WDCM 00109: Good - black medium.
Listeria innocua ATCC® 33090, WDCM 00017: Good - black medium.

Detection range of 10-50 CFU.

Incubation at 37±1°C reading at 24-48 h.



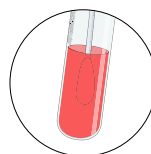
code	description	case quantity	case weight	case volume
200181	Swabs for control of <i>Listeria</i> spp	25	2.84	0.025

Swab for surface control: *Salmonella* spp

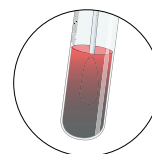
Swab with culture medium and growth indicator for the detection of *Salmonella* spp. directly from surfaces. The medium includes a pH indicator to indicate biological activity.

Interpretation of results

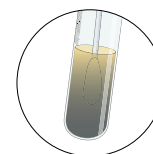
A colour change from red to red/black is indicative of the presence of *Salmonella* spp on the surface. A colour change from red to yellow/black is indicative of the presence of Coliforms on the surface.



Absence of *Salmonella* spp



Presence of *Salmonella* spp



Absence of Coliforms

Microbiological control

Salmonella typhimurium ATCC® 14028, WDCM 00031: Good - medium black/red.
Salmonella enterica ATCC® 13076, WDCM 00030: Good - medium black/red.
Escherichia coli ATCC® 25922, WDCM 00013: Good - medium yellow.
Citrobacter freundii ATCC® 8090: Good - medium yellow.
Shigella flexneri ATCC® 12022: Good - medium yellow.
Enterococcus faecalis ATCC® 29212, WDCM 00087: Inhibited - medium red.

Detection range of 10-50 CFU.

Incubation at 37±1°C reading at 24-48 h.



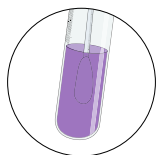
code	description	case quantity	case weight	case volume
200182	Swabs for <i>Salmonella</i> spp control	25	2.84	0.025

Swab for surface control: Molds and yeasts

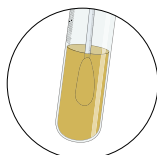
Swab with culture medium and growth indicator for the analysis of moulds and yeasts directly from surfaces. The medium incorporates a pH indicator to indicate biological activity.

Interpretation of results

A colour change from violet to amber is indicative of molds and/or yeasts on the surface.



Absence of yeasts and/or molds



Presence of yeasts and/or molds

Microbiological control

Escherichia coli ATCC® 25922, WDCM 00013: Inhibited - medium violet.
Enterococcus faecalis ATCC® 19433, WDCM 00009: Inhibited - medium violet.
Candida albicans ATCC® 10231, WDCM 00054: Good - medium yellow.
Aspergillus brasiliensis ATCC® 16404, WDCM 00053: Good - medium yellow.
S. cerevisiae ATCC® 9763, WDCM 00058: Good - medium yellow.

Detection range of 10-50 CFU.

Incubation at 37±1°C reading at 24-48 h.



code	description	case quantity	case weight	case volume
200183	Swabs for mold and yeast control	25	2.84	0.025



Swab for surface control: E.Coli and Coliforms

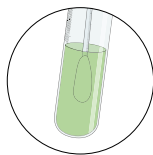
Swab with culture medium and growth indicator for the detection of E. coli and coliforms directly from surfaces. The medium includes a pH indicator to indicate biological activity.

Interpretation of results

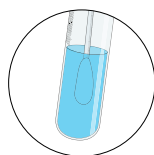
A colour change from yellow to green is indicative of the presence of Coliforms on the surface. A colour change from yellow to blue in the presence of UV-A fluorescence is indicative of the presence of E. coli on the surface.



Absence of E.Coli and Coliforms



Presence of Coliforms



Presence of E.Coli

Microbiological control

Escherichia coli ATCC® 25922, WDCM 00013: Good - Medium blue - Fluorescence.
Escherichia coli ATCC® 8739, WDCM 00012: Good - Medium blue - Fluorescence.
Citrobacter freundii ATCC® 43864, WDCM 00006: Good - Medium blue - No fluorescence.

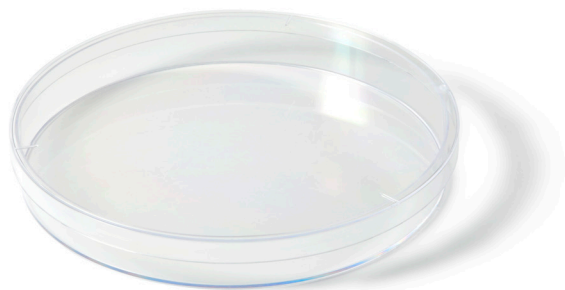
Detection range of 10-50 CFU.

Incubation at 37±1°C reading at 24-48 h.



code	description	case quantity	case weight	case volume
200184	Swabs for E. coli and Coliform control	25	2.84	0.025





90 x 15 mm Petri Dish

Use in microbiology, production or research laboratories to contain different solid and semi-solid culture media (Agars). Subsequently, the medium is sown and microbiological strains are cultivated for analysis. Also used in genetics laboratories.

General characteristics:

- Petri dish 90 mm diameter x 15 mm height.
- Made of highly transparent polystyrene.
- Suitable for the general growth of all types of aerobic and/or anaerobic organisms or microorganisms.
- They can be used to perform specific tests: antibiograms, antigen-antibody reactions.
- The three marks or winds present on the lid of the plate raise it slightly, allowing the exchange of oxygen or other gases or environments, as well as the evaporation typical of the physiological processes of growing organisms.
- Flat surface. Easily stackable thanks to the outer rim of the lid.

Dimensions:

Out diameter cover: 90.3mm

Cap height: 7.9mm

Out Plate diameter: 87.5mm

Plate height: 13.5mm

code	description	sterile	case quantity	case weight	case volume
200207.TH	3 winds	STERILE EO	50 x 10	9.30	0.077

Digirsky spreader. Sterile

Designed for surface spreading.

Made of white polystyrene.

Sterilized by ethylene oxide.

Base length allows spreading liquid samples over any type of Petri dish and avoids contact with the dish walls.

The curved Spreader extremity and rounded corners avoid damaging media surface while spreading. The tip bent and rounded edges minimize the possibility of breakage of the solid medium during extension. It allows their use in places where sterilization before use is not possible (for instance when samples are collected far from the lab).

Available in peel-pack containing 5 units, marked with code, expiry date, lot and sterilization method.

Dimensions:

Total length: 149.0 ± 2 mm.

Base length: 40.0 ± 1 mm.

Diameter: 4 ± 0.3 mm.



code	presentation	case quantity	case weight	case volume
200500.1TH	5 units peel-pack	10 x 100	3.40	0.018

Sterile calibrated loops

Inoculation loops used for collection and inoculation by streaking or puncturing method. Flexible loops made of HIPS material. Hexagonal shaft with stripes. They are ideal for inoculation in gel surface by streaking.

Sterilised by radiation.

Two sizes available: 1 µl and 10 µl.

Not recommended for colony counting. Sterile inoculating loops.

Batch and expiry date printed on the bag.

The packaging offers a double closure with a zipper system that closes the coat once opened.

Inoculation loops 1 µl:

Internal diameter: 0.75 ± 0.08 mm

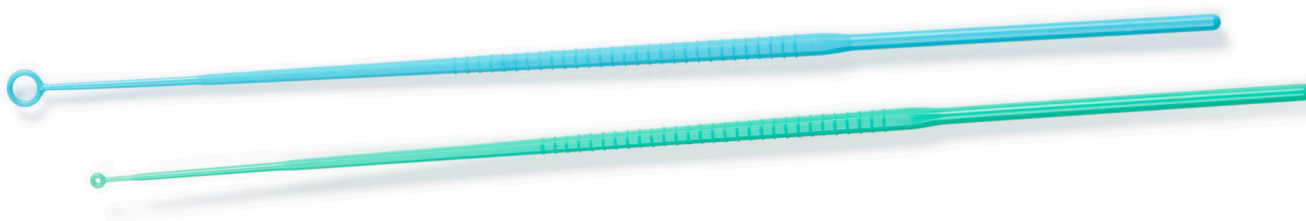
Length: 200 ± 1.5 mm

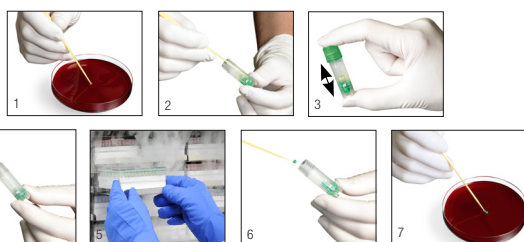
Inoculation loops 10 µl:

Internal diameter: 4.1 ± 0.08 mm

Length: 200 ± 1.5 mm

code	µl	presentation	colour	case quantity	case weight	case volume
302713.TH	1	10 ud. zip lock	green	4 x 1,000	5.68	0.034
302714.TH	10	10 ud. zip lock	blue	4 x 1,000	5.89	0.034





CRYOINSTANT: Cryoplates for the preservation of microbiological strains

Sterile system for the preservation of microbiological strains (for example, fungi in sporulation phase), consisting of a 2 ml cryovial with a skirt, containing 25 glass cryoprobes treated with cryoprotectants that act as a preservative. Thanks to this system we can:

- Have a **perfect means of preservation**
- Obtain up to **25 replicas** of the same microbial generation to use progressively for years
- Facilitate the inoculation of the bacteriological medium, since each pearl is equivalent to a culture
- Dispense with the defrosting of the entire vial every time we extract a pearl
- Avoid the formation of ice crystals in recovery
- **Minimize the risk of cross contamination**
- **Save freezer space**

COMPONENTS

The cryovial is made of polypropylene with an external thread. Resists up to **-190 °C**. Long skirt cap, with silicone gasket To facilitate the classification of samples, our cryovials are offered with caps and pearls in five different colors (except code 409113/6, which is an assortment).

This system allows rapid identification of the sample, differentiating each type of microorganism according to the color of the cap and the pearl. The cryovials are presented in a rack of 100 units, made of cardboard resistant to **-100 °C**. Each box is supplied labeled with indication of code, batch, expiration, cap color, and shrink wrap.

Expiration: 48 months from the date of manufacture. **Sterile by autoclave.**

code	beads and cap colour	rack dimensions	case quantity	case weight	case volume
409113/6	assorted: 5 x 20 cryovials	150 x 150 x 55 mm	100	2.96	0.011

15 ml and 50 ml centrifuge tubes

Tube it is made of polypropylene and cap it is made of High Density Polyethylene. Suitable for both clinical and research applications.

High transparent, medical PP material with flat blue cap for for molecular biology. RCF rating up to 7000×g for conical tubes.

Easy-to-read white printed graduations and a large white frosted spot for labeling. Packaged in convenient reusable Zip-lock bags.

Tube and cap designed with the system of flat threads for complete leakproof. Highly smooth hydrophobic surface for minimum disturbance during centrifugation. Silk-screen white graduation in the tube and large white frosted portion area for easy writing.

Autoclavable at 121 °C.

Centrifugation resistance: **7.000 xg**.

Dimensions (±0.09)

code	external diameter mm	total length mm	printed graduated range mL
429941.TH	17	120	2 to 15
429949.TH	30	115	5 to 50



code	description	presentation	case quantity	case weight	case volume
429941.TH	conical 15 ml tube	10 x 50 tubes	500	8.50	0.03
429949.TH	conical 50 ml tube	20 x 25 tubes	500	8.50	0.08

EUROTUBO® 12 ml screw cap tubes, round bottom

Made of **autoclavable (121 °C)** transparent polypropylene or polystyrene. Green cap made of high density polyethylene. Dimensions: 15 x 102 mm. The external skirt allows the tubes to remain **free-standing**. Supplied screwed. Recommended volume: 12 ml. The sterile model (ethylene oxide) is supplied individually in flow-pack bag, with indication of batch, expiration date, etc. According to the guidelines for sterile products.

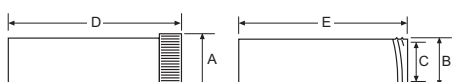
Attention: For autoclaving, the cap should be loose on the thread and not tightly fitted.



code	autoclavable	sterile	max. volume ml	volume ml	case quantity	case weight	case volume	cases pallet
401403	✓	no	14.2	12	6 x 250	11.11	0.082	20

Dimensions (±0,09):

code	A external cap Ø mm	B external tube Ø mm	C internal tube Ø mm	D length with cap mm	E length without cap mm
401403	20.9	16.2	14.3	102.9	101.5



Resistance to centrifugation:
PS: 7,500 xg. PP: 15,000 xg.



Round bottom polystyrene tubes

Manufactured from high technology, new generation moulds to ensure the reproducibility of each tube. Tubes are made in one piece to ensure uniformity and dimensional accuracy from tube to tube.



code	dimensions mm	volume ml	case quantity	case weight	case volume	cases per pallet
300700	13 x 75	5	4 x 1,000	13.04	0.082	20
300705	16 x 100	10	5 x 500	15.00	0.110	16
300800.1	12 x 75	5	4 x 1,000	9.75	0.072	20

Dimensions (±0.09)

code	internal diameter mm	external diameter mm	total length mm	maximum volume ml
300700	10.9	12.9	74.7	6.7
300705	13.8	16.0	99.8	13.2
300800.1	10.2	11.8	74.5	5.5

Suitable for centrifugation up to 7,500 xg.
All tubes are suitable for laboratory use.





Ultra clear polypropylene round bottom tubes

Manufactured from high technology, new generation moulds to ensure the reproducibility of each tube. Tubes are made in one piece to ensure uniformity and dimensional accuracy from tube to tube.

Autoclavable up to 121 °C.



code	dimensions mm	volume ml	case quantity	case weight	case volume	cases per pallet
400800.1	12 x 75	5	4 x 1,000	8.28	0.075	20
400700	13 x 75	5	4 x 1,000	11.15	0.082	20

Dimensions (±0.09)

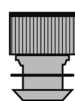
code	internal diameter mm	external diameter mm	total length mm	maximum volume ml
400800.1	10.2	11.7	73.9	5.3
400700	10.9	12.7	73.7	6.4

Suitable for centrifugation up to 15,000 xg.
All tubes are suitable for laboratory use.

Polyethylene caps for tubes of Ø 12 - 13 mm

Recommendations to be considered in all plug caps:

- When using this type of cap there is less useful volume inside the tube.
- When leaving it standing up on the table, it is better to place it with the wings facing upwards to avoid the liquid wetting the surface.



307106 & 307102 Dimensions:

Inner diameter: 11.25 mm
External diameter: 13.30 mm
Overall Length: 17.40mm



305802 Dimensions:

Inner diameter: 10.60 mm
External diameter: 15.00 mm
Overall Length: 15.30mm



Caps for 13 mm tubes (300700 & 400700):

code	color	case quantity	case weight	case volume
307106	red	2,000	1.50	0.007
307102	white	2,000	1.50	0.007

Caps for 12 mm tubes (300800.1 & 400800.1):

code	color	case quantity	case weight	case volume
305802	white	2,000	1.76	0.007

2 ml safety lock microtubes

Featuring a special “snap-seal” secure lock.

A special locking clasp with a distinctive audible snapseal design ensures tubes will not open during centrifugation. Tubes have a frosted writing surface on side and on attached closure for better sample identification.

Feature a frosted writing surface on side and on closure for better sample identification. Easy handling: tubes can be opened and closed with one hand. Lids are easily pierceable.

Material: Polypropylene

Round bottom

Dimensions: 10.65 x 39.75mm

Molded graduation from 0.5 - 2.0ml

Use in temperature conditions between -86°C to 121°C

Autoclavable



code	colour	case quantity	case weight	case volume
4092.6NTH	natural colour	10 x 500	5.94	0.065

Withstand centrifugation up to **15,000 xg**.



1.5 ml safety lock microtubes

Made of **autoclavable (121 °C)** transparent polypropylene. Featuring a special “snap-seal” secure lock. A special locking clasp with a distinctive audible snapseal design ensures tubes will not open during centrifugation. Tubes have a frosted writing surface on side and on attached closure for better sample identification.

Caps are easy to handle and can be opened and closed with one hand. Lids are easily pierceable. Tubes have moulded-in graduations in 0.5 ml increments.

Material: Polypropylene

Conical bottom

Dimensions: 10.6 x 39.5mm

Molded graduation from 0.5 - 1.5ml

Use in temperature conditions between -86°C to 121°C

Autoclavable



code	dimensions Ø x h mm	case quantity	case weight	case volume
4092.4NTH	11 x 39	10 x 500	5.30	0.046

Withstand centrifugation up to **15,000 xg**.





Bags for Autoclave

Printed with the biohazard graphic symbol and instructions of use in five languages. Do not close the bags hermetically when placing them in the **autoclave** a **121°C**. Manufactured in autoclavable polypropylene.

Dimensions: 60 x 75

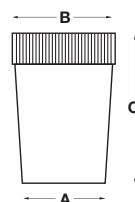
Gauge: 150



code	aprox. capacity l	thickness microns	bag quantity	case weight	case volume
200312	49	37.5	200	6.25	0.020

60 ml polypropylene containers (38 x 65 mm)

60 ml containers and cap are made by polypropylene. Screw cap leak proof screw and tightly close in yellow color. Markers for volume indications 10 - 60 mL. Individually wrapped.



Dimensions:

A: 37.2 mm; B: 43.8 mm; C: 66.4 mm.

Maximum volume: 62 ml.

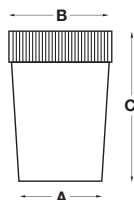
Recommended volume: 60 ml.



code	description	case quantity	case weight	case volume
409529.TH	polypropylene individually wrapped	10 x 100	8.55	0.166

60 ml polypropylene containers (38 x 65 mm)

New generation of 60 ml sterile containers with high safety closure biflex caps. Specially designed for pneumatic transport of specimens. Caps made of polyethylene. Standard colour of the cap: red. Individually wrapped, labelled. Moulded graduation in 5 ml increments.



Dimensions:

A: 38.8 mm; B: 44.2 mm; C: 66.1 mm.

Maximum volume: 62 ml.

Recommended volume: 50 ml.



mod.	code	labelled	description	sterile	case quantity	case weight	case volume
1	409526G	no	graduated	STERILE A	750	10.50	0.140
2	409526.1	yes	non graduated	STERILE A	750	10.13	0.140

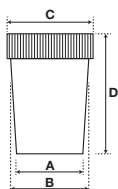


1

2

120 ml containers (57 x 73 mm)

Ultra clear polypropylene containers with polyethylene leak proof screw caps. Moulded graduation in 20 ml increments up to 100 ml. Frosted panel on side for easy writing. Individually wrapped, labelled. Standard colour of the cap: red.



Dimensions:

A: 48.3 mm; B: 56.3 mm; C: 62.1 mm; D: 74.3 mm.

Maximum volume: 120 ml.

Recommended volume: 100 ml.



code	description	sterile	case quantity	case weight	case volume
409726	polypropylene individually wrapped	STERILE A	350	6.45	0.140



Graduated pipettes

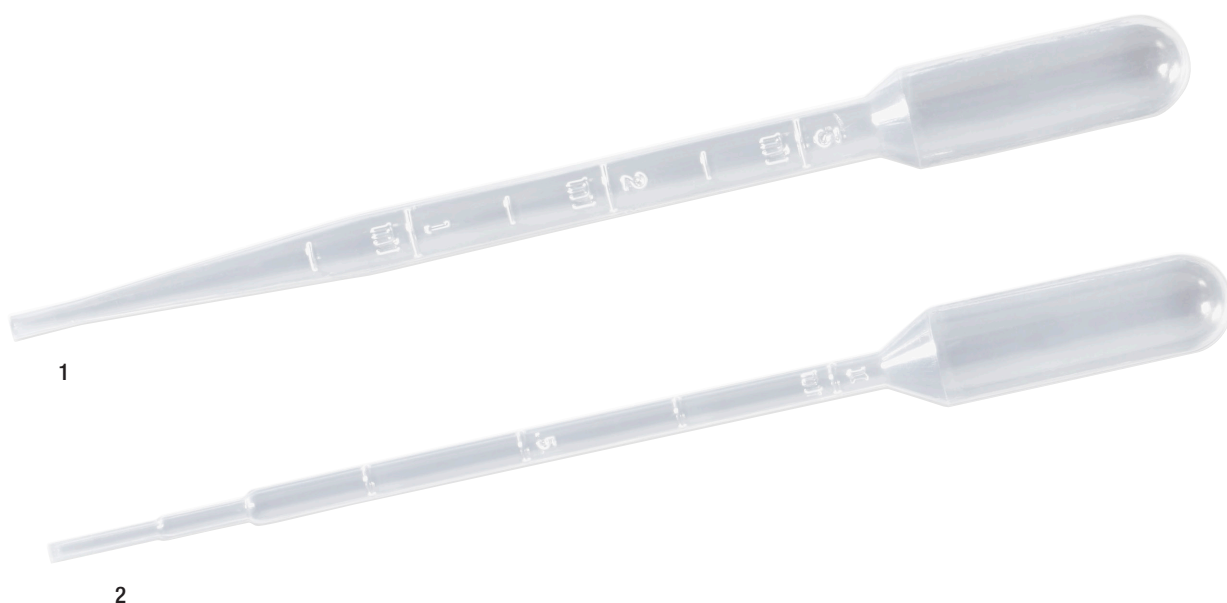
Made in transparent, inert and low density polyethylene.

Sterile models are ethylene oxide sterilized.

Volumetrical tolerance: $\pm 10\%$.

1
2
3

mod.	code	presentation	sterile	length mm	Ø stem mm	graduated until ml	total capacity ml	bulb draw ml	stem draw ml	graduations ml	case weight	case volume
1	200006.TH	10 x 500	no	155	7.9	3	7.5	3.2	4.3	0.50	11.40	0.12
1	200007.TH	10 x 100 individually wrapped peel-pack	STERILE EO	154	7.8	3	7.0	3.2	3.8	0.50	4.00	0.50
2	200003.TH	6 x 500	no	155	4.6	1	5.8	3.4	2.4	0.25	7.00	0.07
2	200004.TH	10 x 100 individually wrapped peel-pack	STERILE EO	154	5.0	1	5.0	3.1	1.9	0.25	3.79	0.05



Sterile serological pipettes

Serological pipette designed for quantitatively transferring and dispensing exact volumes of liquid, available in 1mL, 2mL, 5mL, 10mL, 25mL.

Features:

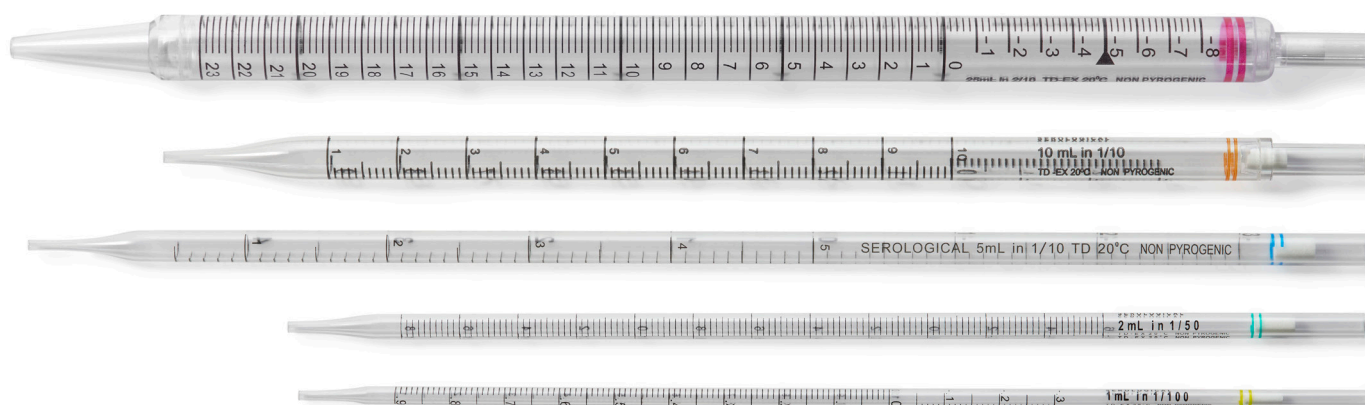
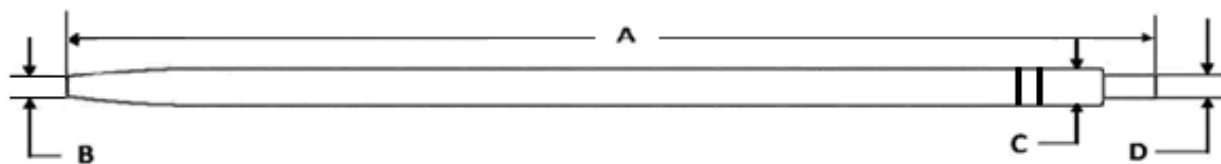
- Individual peel-pack
- Biologically inert PS, disposable.
- Non-Pyrogens, Non-Cytotoxic, **DNase/RNase Free**.
- Sterilization: Radiation.
- Universal design which makes the pipette suitable for most brands of pipette aid.

Storage: Store in a clean, dry environment at room temperature 2-30 °C.

code	capacity ml	presentation	band colour	graduation ml	negative graduation ml	case quantity	case weight	case volume
900030.TH	1	1 peel-pack	●	0.01	0.4	1000	4.60	0.035
900032.TH	2	1 peel-pack	●	0.02	0.8	1000	6.70	0.035
900034.TH	5	1 peel-pack	●	0.1	2.5	200	2.60	0.021
900036.TH	10	1 peel-pack	●	0.1	3.5	200	2.90	0.021
900041.TH	25	1 peel-pack	●	0.2	9.0	200	3.90	0.032

Dimensions (mm)

code	A (±3.0)	B (±0.2)	C (±0.2)	D (±0.2)
900030.TH	271	1.9	4.5	-
900032.TH	271	2.7	6.3	-
900034.TH	340	3.2	8.1	-
900036.TH	344	3.6	10.0	7.8
900041.TH	342	4.7	14.3	8.1





10 µl Gilson® natural tip

Natural colour universal crystal tip, graduated. Gilson® type.
Made of **autoclavable** polypropylene up to **121 °C**.

Suitable (not exclusive)

Gilson®, Eppendorf®, Finnpiquette®, Nichiryo®, MLA®, Oxford® and Handrop®.



code	description	sterile	case quantity	case weight	case volume
200025.TH	tips in bulk	no	40 x 1,000	8.00	0.04



200 µl Gilson® yellow tip

Universal tip, bevelled. Gilson® type.
Tips without filter: yellow colour.
Rack made of **autoclavable** (up to **121 °C**) polypropylene.

Suitable (not exclusive)

Gilson®, Eppendorf®, Finnpiquette®, Nichiryo®, MLA®, Oxford® and Handrop®.



code	description	sterile	case quantity	case weight	case volume
200069.TH	tips in bulk	no	20 x 1,000	7.00	0.047

200 µl Eppendorf® yellow tip

Eppendorf® Universal tip.

Made of polypropylene, **autoclavable** up to **121 °C**.

Tips without filter: yellow colour.

Suitable (not exclusive)

Eppendorf®, Gilson®, Finnpiquette®, Nichiryo®, MLA®, Oxford® and Handrop®.



code	description	sterile	case quantity	case weight	case volume
200099.TH	tips in bulk	no	20 x 1,000	7.00	0.047



1,000 µl Gilson® blue tip

Gilson® Universal tip.

Made of polypropylene, **autoclavable** up to **121 °C**.

Tips without filter: blue colour.

Suitable (not exclusive)

Gilson®, Eppendorf®, Finnpiquette®, Nichiryo®, MLA®, Oxford® and Handrop®.



code	description	sterile	case quantity	case weight	case volume
200090.TH	tips in bulk	no	20 x 500	8.50	0.073



1,000 µl Eppendorf® blue tip

Universal tip with collar. Natural colour, Eppendorf® type.

Made of **autoclavable** polypropylene up to **121 °C**; with hinged lid.

Tips without filter: blue colour.

Suitable (not exclusive)

Gilson®, Eppendorf®, Finnpiquette®, Nichiryo®, MLA®, Oxford® and Handrop®.



code	description	sterile	case quantity	case weight	case volume
200092.TH	tips in bulk	no	20 x 500	8.90	0.073





Slides

Standard size: 25 x 75 mm

Thickness: 0.8 - 1.2 mm

Clear, **pre-cleaned glass**. Ideal for routine analysis.

Frosted or not frosted area of approx. 20mm width, single frosted one end one side

With paper interleaved

Displayed in cases of 72 units.

Designed for routine experiments where no extra adhesion or adaptability to auto-writers is required in histology-pathology, haematology, cytology, microbiology, for blood liquid tests, frozen tissue section examination and biological specimen preparations.

Frosted microscope slides, made of glass material, resistant to commonly used reagents in histopathology cytology lab, should avoid contacting strong alkaline reagents for a long time. The surface of the slide is cleaned. Writing space for sample identifications. Not suitable to use in automatic printers.

Expiry date: 18 months.

code	edges	corners	matt area	case quantity	case weight	case volume
D100098.TH	cut 90°	non clipped	no	50 X 72	20.00	0.02
D100099.TH	cut 90°	non clipped	yes	50 X 72	20.00	0.02



Cover slides

Standard size: Different according each model. (Please check the table below)

Thickness: 0.13 - 0.16 mm

Specific use: protection of the sample and lens.

Supplied in cases of a hundred or two hundred units (depending on the code). Each case includes a bag of silica salt, and is supplied vacuum in tropical pack. Easy opening, no need for scissors. New improved box which minimize the risk of pack breakage and ensure a better lock.

All cover slides are **precleaned and ready to use**.

Expiry date: 18 months.



code	dimensions mm	case quantity	case weight	case volume
D102222.TH	22 x 22	20 x 1000	7.50	0.022
D102240.TH	22 x 40	20 x 1000	12.50	0.032
D102450.TH	24 x 50	20 x 1000	15.50	0.032
D102460.TH	24 x 60	20 x 1000	17.50	0.032

Slide printer microscope slides

Measures Standard size: 25 x 75mm

Thickness: 1.1mm

Made of clean, clear and degreased glass, with a colour frosted, hydrophilic, clean and washed white marking area. Resistant to all common laboratory chemicals, high pH, routine stains, etc. and suitable for all common sterilization methods. It is possible to mark with pen, pencil and laboratory marker.

Suitable for manual use and use in printers such as Thermo Slide-Mate® (Thermo-Fisher) slide printer and Signature® (Primer) slide printers.

Precleaned and ready to use.

For other colors, ask the commercial department.

Expiry date: 18 months



code	edges	corners	mark area	case quantity	case weight	case volume
D100010.TH	grounded 45°	clipped	yes	2,500	14.00	0.011

Adhesion microscope slides

Measures Standard size: 25 x 75mm

Thickness: 1.1mm (± 0.1 mm)

White silky frosted area of approx. 20mm width displays at one surface end for marking

Made of super white glass with positive charge coating specially developed for use in immunohistochemistry (IHC) and other more complex applications. It offers a great adhesion of the tissue on the surface of the slide. In addition, it also improves staining itself. Hydrophilic surface tension.

Precleaned and ready to use.

Suitable for use in manual IHC staining, automatic IHC staining with Leica and Dako automated IHC Stainers and routine H&E staining of detachable tissue sections.

Expiry date: 15 months



code	edges	corners	mark area	case quantity	case weight	case volume
D100018.TH	grounded 90°	non clipped	yes	72x20	8.50	0.01

About Deltalab member of SCGP

A leading plastic labware & medware manufacturer and distributor as “Total Solution Provider” in Spain, Europe and Worldwide

Vision: **Innovation, Solution & Service, and Sustainability**

Leading products: **Swabs, Containers & Vacuum Containers, Pipette tips, Tubes & Caps, etc.**

Deltalab Group: 6 Companies

- **3 Manufacturing companies specialist in plastic injection and blowing:**

- Keylab (Barcelona)

- Enfa (Madrid)

- Bicappa Lab (Italy)

- **3 Distributors:** Deltalab (Barcelona), Nirco (Madrid), Equilabo (Murcia)

Market segmentation into 3 Divisions: **Healthcare** – HC, **Industry** – IND, and **Life Science** – LS

Major player in Spain in both manufacturing & distribution

Export globally >125 countries to >900 customers

Manpower: 250 in Spain & 10 Supporting in Thailand

Growing business through Organic investment & acquisition worldwide: Europe, Asia, etc.



Evolution of Deltalab member of SCGP

2006 - Automation of the swabs' production line

1976

 **deltalab**

Deltalab was founded.

A leading consumable manufacturer established in Barcelona, Spain


Diagnóstico & Investigación
Nirco Acquisition

And liquid flocked swab production
"Deltaswab" start

2013

2010 - Grant of the ISO13485 Certificate for industry's quality management for medical device development process

2017



ENFA Acquisition
Blowing & injection

 
eQuilabo & Sanilabo

Equilabo & Sanilabo Acquisition
Deltalab Group - Developed know-how to complete solutions in Healthcare, Life Science, and Industry in Domestic and International levels being "Total Solution Provider to Laboratory"

Worldwide (>125 countries)

2020

2021

 **deltalab**
member of SCGP



M&P with SCGP

SCG Packaging PLC (SCGP) acquired 85% of Deltalab Group to grow business as Deltalab member of SCGP


Plastic Labware Production

Bicappa Lab Acquisition

2023

2024

Asia Hub set up
In Laem Chabang, Thailand



SCGJWD
Laem Chabang Logistics Center
122 Moo 2 Tongsukla, Sriracha, Chonburi
Thailand 20230

www.deltalabgroup.com
info@deltalabgroup.com

