

DELTAPREX^{ONE}

One System, Countless Workflows *Flexible Automation for Every Laboratory*

DELTAPREX ONE is Deltalab's answer to modern laboratories' need to streamline and automatically manage the sample preparation phase before a variety of downstream processing procedures.

By integrating automated solutions, laboratories can improve productivity, reduce human error, and optimize workflows.



Performance

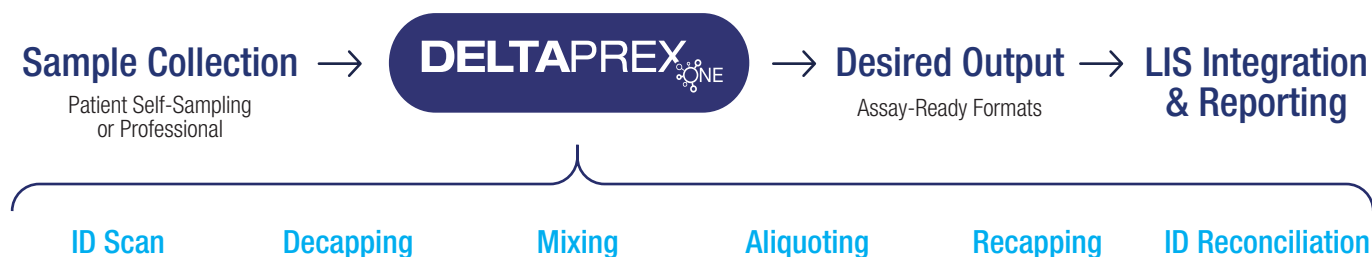
- 900 samples per 8-hour shift (up to 130 tubes/hour or 220 96-well plate samples/hour).
- Process 96 samples in 50 minutes.
- Continuous loading/unloading without pausing the process.
- Walk-away operation with >30 minutes unattended processing time.

Safety & Ergonomics

- Closed-loop automation eliminates cross-contamination.
- 75% reduction in required FTE, reducing manual work from 3–4 technicians to 0.5–1 technician.
- Eliminates repetitive motion injuries (carpal tunnel, shoulder strain) from manual pipetting.
- Closed processing protects staff from biohazard exposure.

WHAT DELTAPREX ONE DOES

Your Workflow Improved



FLEXIBILITY FIRST

Built for Your Laboratory's Needs

Designed with molecular assays and modern preanalytical workflows in mind, DELTAPREX ONE is built to manage sample preparation for all laboratory workflows with exceptional flexibility in terms of input, processing features, and output.

Format Compatibility:

DELTAPREX ONE is compatible with a wide variety of primary collection containers and secondary processing tubes, in terms of formats, dimensions, and materials. Input flexibility includes self-sampling swabs (dry and transport media), liquid cytology containers, blood collection tubes (heparin lithium, K2-EDTA, sodium citrate), PCR tubes, and 96-well plates.

Customizable Outputs:

The system's output configuration can be customized to fit your preferred assay format plate or secondary tube format. DELTAPREX ONE can be expanded with optional modules for different applications, such as enhanced liquid handling capabilities or specialized processing protocols.

One System. Endless Possibilities

While other manufacturers require format-specific instruments, DELTAPREX ONE adapts to YOUR laboratory's needs:

- Multiple input formats in a single run
- Customizable output formats for any downstream platform
- Compatible with Roche®, Abbott®, Seegene®, and other molecular platforms (*)
- Scalable from routine diagnostics to complex research applications
- Continuous sample processing to fit the laboratory's workload



(*) Deltalab confirms that it does not own the Roche®, Abbott® y Seegene® trademarks, nor does it have any association with the company that owns these trademarks.

TECHNICAL SPECIFICATIONS

DELTAPREX ONE

Liquid Handling

- Pipetting range: 10 µL to 1000 µL
- Accuracy: ≤ 1% at 1000 µL
≤ 2% at 100 µL
- RNase and DNase-free tips
- Multiple liquid class protocols

Processing Functions

- ID scanning from barcode
- Decapping / recapping
- Aliquoting
(tube-to-tube, tube-to-assay plate)
- Sample pooling
(in tubes or in assay plates)
- ID reconciliation and verification

System Features

- Barcode reading
- LIS / HIS integration
- Automated ID reconciliation
- Multiple container handling
(different materials, formats, dimensions)
- Different protocol management
- Real-time monitoring and audit trails

APPLICATION AREAS

DELTAPREX ONE supports diagnostic labs from routine HPV and STI screening to complex blood-based applications, microbiome research, and hospital infection monitoring, ensuring more reliable and timely results across multiple areas of molecular diagnostics and microbiology.

- HPV & STIs
- Respiratory diseases
- Hospital Acquired Infections
- Genetics & microbiome
- Gastrointestinal infections
- Blood-based applications

WHY CHOOSE DELTAPREX

For screening programs

DELTAPREX ONE transforms high volume cervical cancer and STI screening programs by automating sample preparation while accommodating both traditional and self-sampling specimens. Reduce manual workload, improve turnaround time, and ensure consistent quality across thousands of samples per month.

For diagnostic laboratories

A single flexible platform handles your complete sample preparation needs—from routine testing to specialized applications — without requiring multiple instruments or format conversions.

For your staff

Automation that protects. Closed-loop processing eliminates cross-contamination risk. Walk-away operation reduces daily biological hazard exposure. Precision pipetting eliminates carpal tunnel and repetitive strain injuries. Staff can redeploy to higher-value diagnostic and clinical activities.

For your laboratory's future

As testing demands evolve and new applications emerge, DELTAPREX ONE scales with your laboratory. A single system adapts to new workflows, new sample types, and new downstream platforms—protecting your capital investment for years to come.

KEY APPLICATION AREAS

HPV screening at scale

Managing the self-screening revolution requires flexible, high-capacity automation. DELTAPREX ONE transforms HPV laboratory workflows:

- **Auto-Elute Dry Self-Collection:**
Fully automated elution of self-sampling swabs eliminates manual steps, reducing processing time from 45 minutes to under 5 minutes per batch.
- **Liquid-Based Cytology Support:**
Simultaneously process traditional liquid-based cytology media alongside self-sampling samples in a single integrated workflow.
- **High-Volume Screening:**
Reduce manual aliquoting steps to zero while maintaining complete sample traceability through barcode-driven processing.
- **Automated Output Preparation:**
Direct preparation of assay-ready formats for downstream HPV testing platforms

Whether managing a routine cervical screening program or supporting the global push toward self-sampling HPV testing, DELTAPREX ONE provides the flexibility and throughput modern screening labs demand.

Sti Testing: Multi-Site Sampling

Accurate STI diagnosis requires testing multiple sample types from a single patient—throat, urethral, vaginal, rectal, and urine samples. DELTAPREX ONE handles this complexity with precision:

- **Multi-Sample Processing:**
Automated preparation of diverse sample types in a single workflow without cross-contamination risk
- **Flexible Aliquoting:**
Prepare different aliquot volumes into 96-well plates or secondary tubes suitable for multiple diagnostic systems
- **Barcode-Driven Traceability:**
Complete ID tracking ensures samples are never confused, even when processing 50+ samples per hour
- **Parallel Preparation:**
Automatically prepare different outputs from the same patient sample for sequential testing or backup assays
- **LIS Integration:**
Seamless connectivity ensures test requisitions match prepared samples at every step

DELTA PREX ONE's flexibility means you can manage high-volume STI testing with the same system used for HPV screening - true workflow consolidation.

Blood-Based Applications

Blood processing requires careful handling of different tube types, stabilizers, and liquid classes. DELTAPREX ONE masters this complexity:

- **Multiple Tube Compatibility:**
Process different tube sizes and configurations (standard tubes, pediatric tubes, specialized containers) without changeover
- **Stabilizer Management:**
Dedicated protocols for heparin lithium, K2-EDTA, sodium citrate, and other stabilizers preserve sample integrity
- **Liquid Class Protocols:**
Automatic adjustment of processing parameters to protect plasma, serum, or whole blood characteristics
- **From Multiple Matrix:**
Start from whole blood, serum, or plasma and prepare consistent output formats

DELTAPREX ONE is validated for both infectious disease testing (gamma interferon assays) and molecular applications, making it ideal for immunology, virology, and molecular hematology laboratories.

Microbiome & Gastrointestinal Applications

Microbiome research and GI infection diagnostics require standardized sample handling across large cohorts:

- **Standardized Elution:**
Consistent elution protocols ensure reproducible DNA/RNA recovery across hundreds of samples
- **Batch Processing:**
Process 96+ samples per hour with identical handling protocols
- **Reduced Manual Burden:**
Eliminate manual vortexing, centrifugation, and pipetting steps that introduce batch variability
- **Extended Walk-Away Time:**
Prepare samples for days' worth of testing with >30 minutes of unattended operation

Hospital-Acquired Infections & Clinical Microbiology

DELTAPREX ONE enhances infection surveillance and diagnostic programs:

- **Closed-Loop Automation:**
Eliminate biohazard exposure during routine sample handling
- **Complete Traceability:**
Track samples from collection through reporting for infection control purposes
- **High-Throughput Capability:**
Process 900+ samples per 8-hour shift
- **Quality Consistency:**
90% reduction in quality-related incidents compared to manual processing



FLOCKED SWABS WITH LIQUID TRANSPORT MEDIUM



AMIES

CARY BLAIR

VICUM

VIRUS



AMIES

Particularly suited for microbiological sample collection and transport. It maintains the viability of Aerobes, Facultative Anaerobes and Anaerobes Bacteria for a minimum of 48 hours both at room temperature (20-25°C) and at refrigeration temperature (2-8°C) and 24 hours with Fastidious Bacteria. Designed both for traditional and automated sample streaking.

CARY BLAIR

Specially suited for the collection and transport of faecal samples. Maintains the viability of the fecal pathogens for a minimum of 48 hours without overgrowth. Designed for carrying out sample collection directly from the rectum or from faeces. Designed for traditional and automated sample streaking.

VICUM

Particularly suited for collecting and transporting microbiological samples which contain Virus, Chlamydia, Ureaplasma and/or Mycoplasma. Includes antibiotics which inhibit the growth of Bacteria and Fungi; this ensures reliability in terms of sample recovery. Maintains the viral infectability for a minimum of 96 hours both at room temperature (20-25°C) and at refrigeration temperature (2-8°C). Each tube contains glass beads to facilitate cell lysis, sample homogeneousness and maximize the elution of the sample from the swab.

VIRUS

Particularly suited for collecting and transporting microbiological samples which contain viruses. By including antibiotics which inhibit the growth of Bacteria and Fungi, it ensures the trustworthiness of the sample. It maintains the infectability of viruses for up to 96 hours, both at room temperature (20-25°C) and at refrigeration temperature (4-8°C).

self swab® → DELTAPREX ONE → Molecular diagnostic

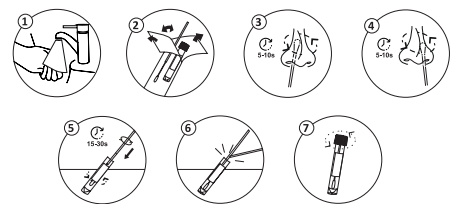
Nasal self-sampling kit with virus medium

Sterile invasive system for self-sampling with virus transport medium for subsequent microbiological analysis. Especially indicated for the collection and transport of microbiological samples containing viruses. By including antibiotics that inhibit the growth of bacteria and fungi, it ensures suitability in sample recovery. Maintains the viability of viruses for up to 96 hours both at room temperature and refrigeration. Designed for cell culture and to be compatible with molecular diagnostic techniques.

- Tube with 3 ml of virus transport medium with a mauve cap indicating the type of transport medium.
- Standard flocked swab with a breaking point at 80 mm.
- Presentation in peel-pack.



Regulation (UE) 2017/746 on *in vitro* diagnostic medical devices (IVDR).
Expiry date: 18 months.



Kit for the detection of sexually transmitted infections

Sterile invasive system for self-sampling by direct contact with the patient, with and without transport medium, for the purpose of subsequent *in vitro* diagnostic testing. The product is intended for use by lay users (non-professionals). Product intended for self-sampling in different anatomical areas oral (A), vaginal/ urethral (B) and rectal (C).

- 3 sets 304221KF consisting of a standard swab + tube with AMIES transport medium.
- 2 sets 304238KF consisting of a standard swab + tube with VICUM® transport medium.
- 1 set E300016KP.2 consisting of two thin swabs.
- Stickers labelled A, B1, B2 or C to stick to the tubes with transport medium after taking the samples.



Regulation (UE) 2017/746 on *in vitro* diagnostic medical devices (IVDR).
Expiry date: 24 months.



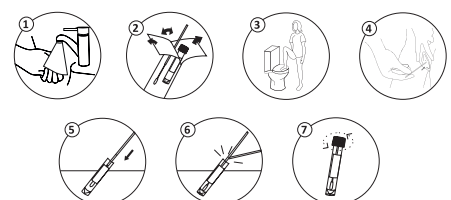
Vaginal self-sampling kit for HPV

Sterile invasive product for self-sampling of vaginal samples by lay users for subsequent sending to the clinical laboratory, for the purpose of performing a subsequent examination by *in vitro* diagnosis.

- A standard flocked swab with a breaking point at 100 mm.
- 12 ml round-bottom tube with skirt, in a single bag.
- Presentation of the set in peel-pack.



Regulation (UE) 2017/746 on *in vitro* diagnostic medical devices (IVDR).
Expiry date: 48 months.





Please contact us for sales enquiries:

Sede central

Av. La Llana, 115-117
Pol. Industrial La Llana
08191 Rubí - Barcelona
Tel.: 93 699 50 00

Madrid

Puerto de Navafría 12
28935 Móstoles - Madrid
Tel.: 91 616 42 68

Murcia

Pol. Ind. Los vientos
Calle Neptuno 59A
30565 Las Torres de Cotillas
Murcia
Tel.: 96 862 65 09

Valencia

Parque comercial Albufera
Edificio Albufera - Oficina 801
Plaza Alquería de la Culla, 4
46910 Alfafar - Valencia
Tel. : 96 395 08 09

VISIT OUR WEBSITE



info@deltalabgroup.com

www.deltalabgroup.com