

SWABS FOR SURFACE CONTROL: LISTERIA SPP

(Ref. 200181)

Intended use:

Swab with culture medium and growth indicator for the detection of *Listeria* spp. directly from surfaces. Culture medium incorporates a pH indicator to indicate biological activity, by changing the color of the medium that is easily visible.

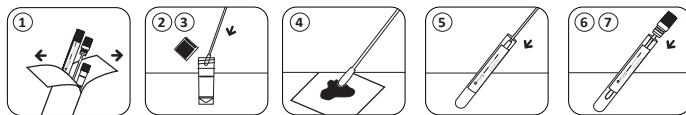
Presentation:

The product consists of a pouch containing a tube with culture medium and a sterile swab. Each package contains:

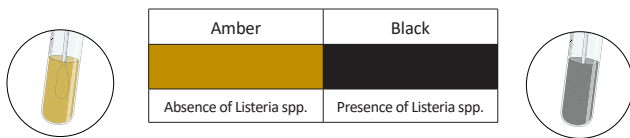
- 25 sealed pouches (swab + tube with culture medium). (25 test)

Instructions for test procedure:

1. Take the sterile swab contained in the pouch, avoiding touching the tip.
2. Moisten the tip of the swab by deeping it in sterile physiological solution.
3. Drain excess liquid by resting the tip of the swab against the tube wall.
4. Streak the swab on a surface template (10cm x 10cm) horizontally and vertically.
5. Insert the swab into the tube containing the culture medium.
6. Close the tube and write the date and place of sampling.
7. Incubate at 37°C for 18-24 hours.


Interpretation of results:

Watch the colour change of the medium and interpret the results as shown in the table below:



A colour change from amber to black is indicative of presence of *Listeria* spp. on the surface.

Quality control:
Physical/Chemical control:

Color: Yellowish pH: 7,0 ± 0,2 a 25°C

Microbiological control:

Inoculate: Practical range 10-50 CFU.

Aerobiosis. Incubation at 37±1°C, reading after 18-24 h

Microorganism	Growth
<i>Escherichia coli</i> ATCC® 25922, WDCM 00013	Inhibited - Yellowmedium
<i>Enterococcus faecalis</i> ATCC® 19433, WDCM 00009	Inhibited - Yellowmedium
<i>L. monocytogenes</i> ATCC® 35152, WDCM 00109	Good - Black medium
<i>Listeria innocua</i> ATCC® 33090, WDCM 00017	Good - Black medium

Sterility control:

Incubation 48 h at 30-35 °C and 48 h at 20-25 °C: NO GROWTH.

Check at 7 days after incubation in same conditions.

Storage requirements:

The kit can be used until the expiry date shown in the pouch and the package the label when stored away from light at 10-25°C.

Eliminate if signs of deterioration or contamination are evident and if the individual package is damaged.

References:

ATLAS, R.M. & L.C. PARKS (1997) Handbook of microbiological media. CRC Press. BocaRaton.Fla. USA. ISO 17604:2003 - Microbiology of food and animal feeding stuffs. Carcass sampling for microbiological analysis.

ISO 18593:2004 - Microbiology of food and animal feedings stuffs. Horizontal method for sampling techniques from surfaces using contact plates and swabs.

General precautions:

1. Results for sampling should be read from the colour change in the culture medium after the incubation period.
2. The results may be affected by high levels of detergents and cleaners present on a surface and may result in inaccurate assay results. If testing on a known clean surface results in an immediate colour change, this may be indicative of detergent or cleaner residue on the surface. Rinse the surface thoroughly and test again to obtain accurate results for surface contamination.
3. Follow proper established laboratory procedures.
4. Do not use the kit after the expiry date.

Symbol glossary:

	Do not use if Package is damaged	LOT	Batch code	REF	Catalogue number		Do not re-use
	Keep away from sunlight		Manufacturer		Limit of temperature: 10-25°C		Use-by-date
	Consult instructions for use on the website www.deltalab.es/eifus						